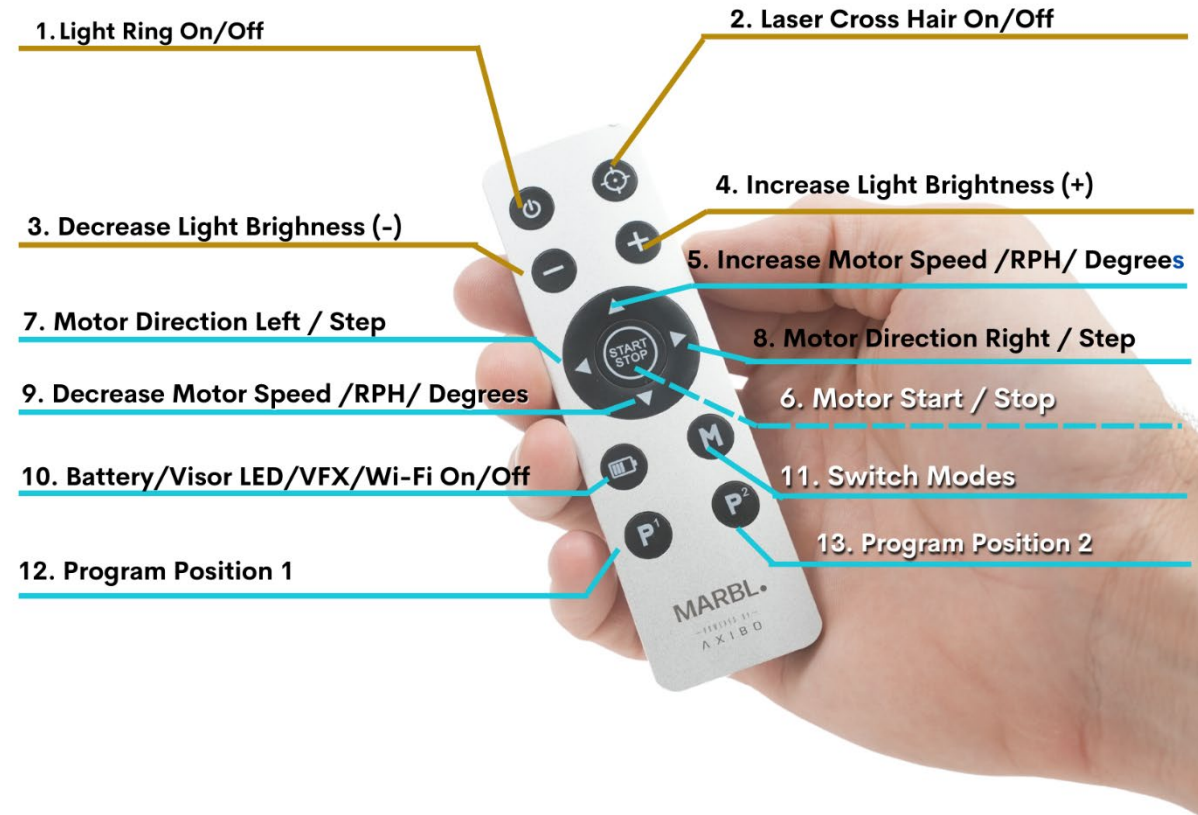


# MARBL.

## Remote Quick Start

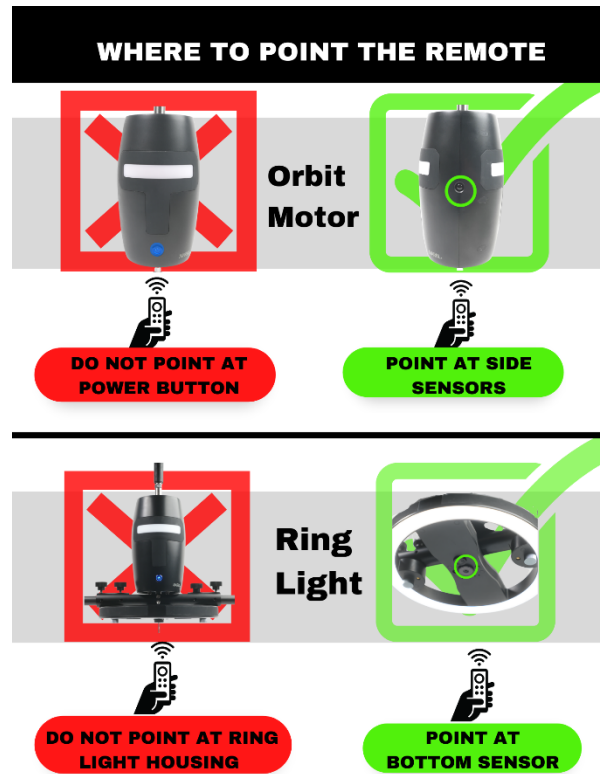
■ Light Ring Buttons

■ Motor Buttons



# OPTIMIZING REMOTE RANGE

The IR sensors are located on the sides of the Orbit Motor and the bottom of the Ring Light. The remote control will function best if you make it a point to set the Orbit up with IR sensor in your direct line of sight.



## REMOTE BUTTONS FOR RING LIGHT

### 1. LED Light Ring On/Off

- Pressing once turns Light Ring ON.
- Pressing again, turns Light Ring OFF.

### 2. Laser Crosshair On/Off

- Double Press: Laser turns on for 15 seconds, then automatically turns off.
- Pressing again before it turns off will turn off laser faster.

### 3. Decrease Light Ring Brightness (-)

- Decreases Light Ring brightness up to six (6) steps brightness (0%, 1%, 10%, 25%, 50%, and 100%)

### 4. Increase Light Ring Brightness (+)

- Increases Light Ring brightness down to six (6) steps brightness (0%, 1%, 10%, 25%, 50%, and 100%)

# REMOTE BUTTONS FOR ORBIT MOTOR

The **Motor** flashes white each time a successful command is received from the **Remote Control**.

## MOTOR SPEED:

**ORBIT** will reduce MAX RPM as the battery depletes to optimize the motor performance. (See Chart)

- Max Speed = 10RPM
- Min Speed = 1 Rotation per 48 hours

BATTERY LIFE	MAX RPM
60%-100%	10
50%	5
40%	4
30%	3
20%	2
10%	1

## VISOR COLORS/MODES:

Toggleing the “M” button on the Remote Control will cycle through the modes.

LED COLOR	ACTION/MODE	DESCRIPTION
RED	STOP	No motor movement – Locked position.
GREEN	PRODUCT	Product mode – Operates from ½ RPM to 10 RPM
YELLOW	INTERVIEW	Interview mode – Slower than product (1/30 <sup>th</sup> to 10 RPM)
TEAL	TIME LAPSE	Time Lapse mode – Slowest mode. One rotation every ½ hr to 1 rotation every 48hrs.
DARK BLUE	STOP MOTION	Stop Motion Mode – Moves by degrees on direction press at a fixed speed of ¼ RPM.

### 5. Increase Motor Speed / RPH (Rotation per hour)/ Degrees Increase

- Press the START/ STOP button, then push opposite direction to retain the Motor Speed.
- Speed increase works in **Product**, **Interview**, and **Time Lapse** modes
- **Stop Motion** Mode – Increase / Decrease only allows you to set movement in degrees (0.5°, 1°, 2°, 5°, 10° or 15°) Orbit will move to specified degree at a set speed of 0.25 RPM
- **Product** Mode – 1/2 RPM
- **Interview** Mode – Approximately 1/30th RPM or .03RPM
- **Time Lapse** Mode – 1 RPH (Rotation per (0.5, 1, 3, 6, 12, 24, 48) Hours) **Motor Start / Stop**
- Press once to start motor with last used speed /direction, except after start-up. Reboot resets mode / speed information.
- Press once when motor is moving to bring motor to a gradual stop.

## 6. Motor Direction Left / Step

- Motor direction to the left (counter clockwise).
- If motor is spinning to the right (clockwise), this brings **ORBIT** to a gradual stop, then reverses direction, with same speed setting.

## 7. Motor Direction Right / Step

- Motor direction to the right (clockwise).

## 8. Decrease Motor Speed / RPH (Rotation per hour) / Degrees Decrease (Refer to Table)

- Speed increase/ decrease only works in **Product, Interview, and Time Lapse** modes
- **Skip to max / min speed allowed by battery level.** Select mode then make sure **ORBIT** is stopped and visor color is red.
- Press UP arrow 2X to start **ORBIT** in max speed. Conversely press DOWN arrow 2X fast to go to lowest speed. This setting only works in **Product** and **Interview** modes. When pressed the opposite direction, the speed will slowly stop and begin to rotate in the opposite direction at the same motor speed. You can also accomplish direction change by pressing the START/ STOP button selecting a direction.

## 9. Battery Indicator / Visor LED / VFX / WiFi On/Off:

- **When pressed once:** Displays Battery level by flashing GREEN, ORANGE, or RED.
  - **GREEN FLASH** – 70% or more battery life remaining.
  - **ORANGE FLASH** -30% to 69% battery life remaining.
  - **RED FLASH**- Less than 29% Battery remaining.
- **Disable LED Visor**
  - 2X: Press Battery Button two times fast.
- **Disable/Enable VFX Blip**
  - 3X: Press Battery Button three times fast.
- **Enable/Disable Stealth Drive** (Turn off Wi-fi for silent operation under 3 RPM)
  - 4X: Press Battery Button four times fast.
  - *Note: This will deactivate use of the app until you use this function on the remote to reactivate wi-fi or hard reset the **ORBIT Motor** with power button.*

## 10. Switch Mode Button (M)

Each press of the (M) button cycles to the next mode until it cycles back to default (Product) mode. Modes will cycle Product (Green), Interview (Yellow), Time Lapse (Teal), Stop Motion (Blue).

## 11. Program Position 1 “P1”

- Program / Recall
- P1/P2 Enables Wiper Mode – **ORBIT** moves back and forth automatically between the two positions. Ideal for interviews.
- Single press P1 to program the current location. Use this in any of the speed modes, when visor is Green, Yellow, or Teal, to retain the current speed but will lock the location and reverse the direction of the **ORBIT**.

## 12. Program Position 2 “P2”

- Program / Recall
- Single press P2 to program the current location. Use this in any of the speed modes, (when visor is green, yellow, or teal) to retain the current speed but will lock the location and reverse the direction of the **ORBIT**.
- When programming: immediately after programming P1, this will mark the second location and the **ORBIT** will switch between the two positions.
- You can change speeds like normal, by using the up/down buttons.
- The LED visor on **ORBIT** will pulse when wiper function is active.
- To escape wiper mode press P1, then P2 quickly, or restart the **ORBIT** with power button.

## STOP MOTION FUCTIONS EXPLAINED:

Stop Motion is the only mode where speed and direction buttons have a different function than the other modes.

**Left/Right Arrows:** (LED = Navy Blue):

- Default speed is 0.25 RPM
- Deactivates moving by hand
- Each directional button press will move orbit “ X” degrees and stop until pressed again.

**Up/ Down Arrows**

- 0.5 degrees / Press 720 x = 1 rotation
- 01 degrees / Press 360 x = 1 rotation
- 2 degrees / Press 180x = 1 rotation
- 5 degrees / Press 72 x = 1 rotation
- 10 degrees / Press 36x = 1 rotation
- 15 degrees / Press 24x = 1 rotation